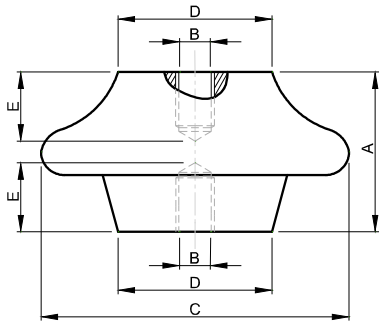


ADVANCED TECHNICAL INFORMATION

DRAWINGS AND DIMENSIONS

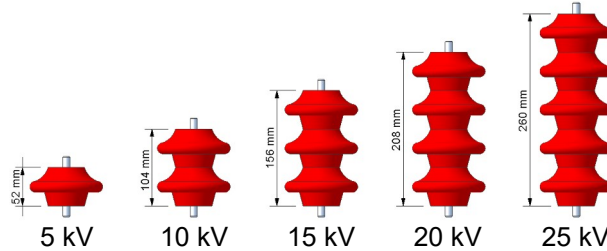


AVAILABLE REFERENCES

Reference	A [mm]	B	C [mm]	D [mm]	E [mm]	Tightening torque [Nm]	V <sub>NOM</sub> [V]
I2IC 1000 10 M8	52	M8	100	50	15	22	5000
I2IC 1000 10 M10	52	M10	100	50	15	24	5000
I2IC 1000 10 M12	52	M12	100	50	16	36	5000
I2IC 1000 10 M16	52	M16	100	50	16	50	5000

HIGH VOLTAGE STACKING OPTIONS

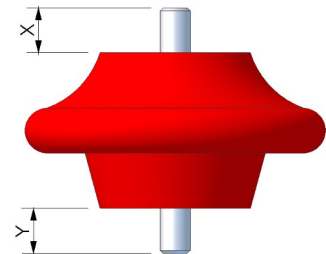
Reference	Total height	Voltage	Max. Operating Voltage	Withstand voltages Industrial freq.	Withstand voltage Impulses
1x I2IC 1000	52 mm	5 kV	7.2 kV	28 kV	60 kV
2x I2IC 1000	104 mm	10 kV	12 kV	38 kV	75 kV
3x I2IC 1000	156 mm	15 kV	17.5 kV	45 kV	95 kV
4x I2IC 1000	208 mm	20 kV	24 kV	55 kV	125 kV
5x I2IC 1000	260 mm	30 kV	36 kV	75 kV	170 kV



ORDER CODES

**I2IC100010 Mx – xAMxx / xx**  
(1) (2) (3) (4) (5)

- 1 - General code for insulator series. (see available references table)
- 2 - Female connections metric thread size. (see available references table)
- 3 - Number of male threaded studs. 1AM single stud, 2AM for both. (optional)
- 4 - When 1AM or 2AM option, the length X (in mm) of studs.
- 5 - When option 2AM with different length studs, length Y (in mm) of the second male threaded stud. (optional)



**Note:** Threaded stud length tolerance: ±1 mm.

**Examples:**

I2IC100010 M10: Insulator type I2IC with M10 connection drilled holes.

I2IC100010 M8 – 2AM20 : Insulator type I2IC with connection drilled holes of M8 with two threaded stud connections (M8) of the same length, 20 mm.

I2IC100010 M10 – 2AM20/30 : Insulator type I2IC with M10 connection drilled holes with two threaded stud connections (M10) one of them of 20 mm (X) and the other of 30 mm (Y).

## TECHNICAL CHARACTERISTICS

Property	Value	Units
Tensile stress	1950	daN
Compressive stress	14700	daN
Twisting stress	10	daN x m
Cantilever stress	980	daN
Minimum AC surface flashover voltage	50	kV
Minimum AC internal flashover voltage	40	kV
DC and AC operating voltage	5000	V
Creepage	81.5	mm

Operating temperature	Fire reaction	Breaking charge	Water absorption
-40°C +130°C	UL94-V0 class	Tolerance ±10%	<0.2%

## INSULATING MATERIAL CHARACTERISTICS (POLYGLASS)

Property	Standard	Value
Flexural strength	ISO R 178	80 N/mm <sup>2</sup>
Flexural modulus	ISO 178	7 GPa
Impact strength	ISO 179	25 kJ/m <sup>2</sup>
Hot deflection temperature	ISO 75	> 200 °C
Hardness	UNI 4278	80 HRM
Linear shrinkage	ISO 2577	0.18%
Flammability	UL 94	V0 >3mm
Dielectric strength	IEC 60243-1	12 kV/mm
Tracking resistance	IEC 60112	CTI >600 -0.0
Arc resistance	ASTM D495	>180 s
Density	ISO 1183-1	1.8 g/cm <sup>3</sup>
Water absorption	ISO 62	<0.2 %
Color	RAL	RAL 3002 (red)



Our Polyester insulators are in conformity with DIRECTIVE 2006/95/EC (Electrical equipment designed for use within certain voltage limits). Directive 2006/95/EC is a codifying Directive which brings together in one text the "original" Low Voltage Directive 73/23/EEC6 with its subsequent amendments. Directive 2006/95/EC came into force and repealed Directive 73/23/EC as from 16th January 2007. The Directive applies to all electrical equipment designed for use with a voltage rating of between 50 and 1000 V for alternating current and between 75 and 1500 V for direct current. The CE marking is placed on the electrical equipment or, where this is not practically possible, on the packaging.



This polyester insulators are molded of Underwriters Laboratories Incorporated recognized flame-resistant fiberglass-reinforced polyester molding compound.

EN 45545

Conformity according to EN 45545 part 2 : Railway application- Fire protection on railway vehicles - Part 2: Requirements for fire behaviour of materials and components.

Test results :

Spread of flame : HL3 / Smoke : HL2 / Toxicity : HL3 / Heat release : HL2 / Final classification : HL2

**ANOTACIONES EN LA HOJA DE ESPECIFICACIONES:**

RECTIFICADORES GUASCH, S.A.U. utiliza la siguiente anotación para identificar el estado del producto, en el lado izquierdo de la primera página:

**Preliminary Technical Information:** El producto se encuentra en proceso de diseño y desarrollo. La información presenta los datos del producto pero algunas características pueden cambiar.

**Advanced technical information:** El producto se encuentra totalmente diseñado y las características se refieren a la fabricación en serie.

**Sin anotación:** Los parámetros del producto están fijados y se suministra de acuerdo con las especificaciones publicadas.

Los datos indicados en esta publicación corresponden a especificaciones de producto, queda excluida cualquier garantía expresa o implícita sobre sus propiedades o su aplicación, así como cualquier responsabilidad sobre daños directos o indirectos producidos por los materiales o resultantes de su aplicación. La empresa se reserva el derecho de realizar cambios en las especificaciones de los productos sin previo aviso. La información respecto a métodos de uso y aplicaciones se indica sólo como guía y no constituye garantía alguna de funcionamiento satisfactorio en un determinado equipo o aplicación. Es responsabilidad del usuario determinar la idoneidad del producto para su aplicación utilizando la información disponible y asegurarse de que la misma esta actualizada.

Cualquier nombre de producto o marca usada en esta publicación corresponde a marcas depositadas, marcas registradas o nombres protegidos por sus respectivos propietarios.

**DATASHEET ANNOTATIONS:**

RECTIFICADORES GUASCH, S.A.U. annotate datasheets in the left corner of the front page, to indicate product status:

**Preliminary Technical Information:** The product is in design and development. The datasheet represents the product as it is understood but details may change.

**Advanced Technical Information:** The product design is complete and final characterisation for volume production is well in hand.

**No Annotation:** The product parameters are fixed and the product is available to datasheet specification.

The technical data are to specify components, not to guarantee their properties.No warranty or guarantee expressed or implied is made regarding delivery or performance. The Company reserves the right to alter without prior notice the specification of any product. Information concerning possible methods of use is provided as a guide only and does not constitute any guarantee that such methods of use will be satisfactory in a specific piece of equipment. It is the user's responsibility to fully determine the performance and suitability of any equipment using such information and to ensure that any publication or data used is up to date.

All brand names and product names used in this publication are trademarks, registered trademarks or trade names of their respective owners.

© RECTIFICADORES GUASCH, S.A.U.  
DOCUMENTACION TECNICA, TECHNICAL DOCUMENTATION  
PRODUCIDO EN ESPAÑA, PRODUCED IN SPAIN  
PROHIBIDA SU VENTA, NOT FOR SALE

**Your Needs, Our Solutions**